

DREAM



BROWN

182x1220x4+1 mm - 7"x48" - CESPC182001



IVORY

182x1220x4+1 mm - 7"x48" - CESPC182002
230x1540x5+1 mm - 9"x60" - CESPC230002



NATURAL

182x1220x4+1 mm - 7"x48" - CESPC182003

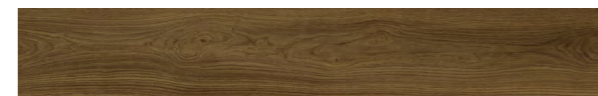


OAK

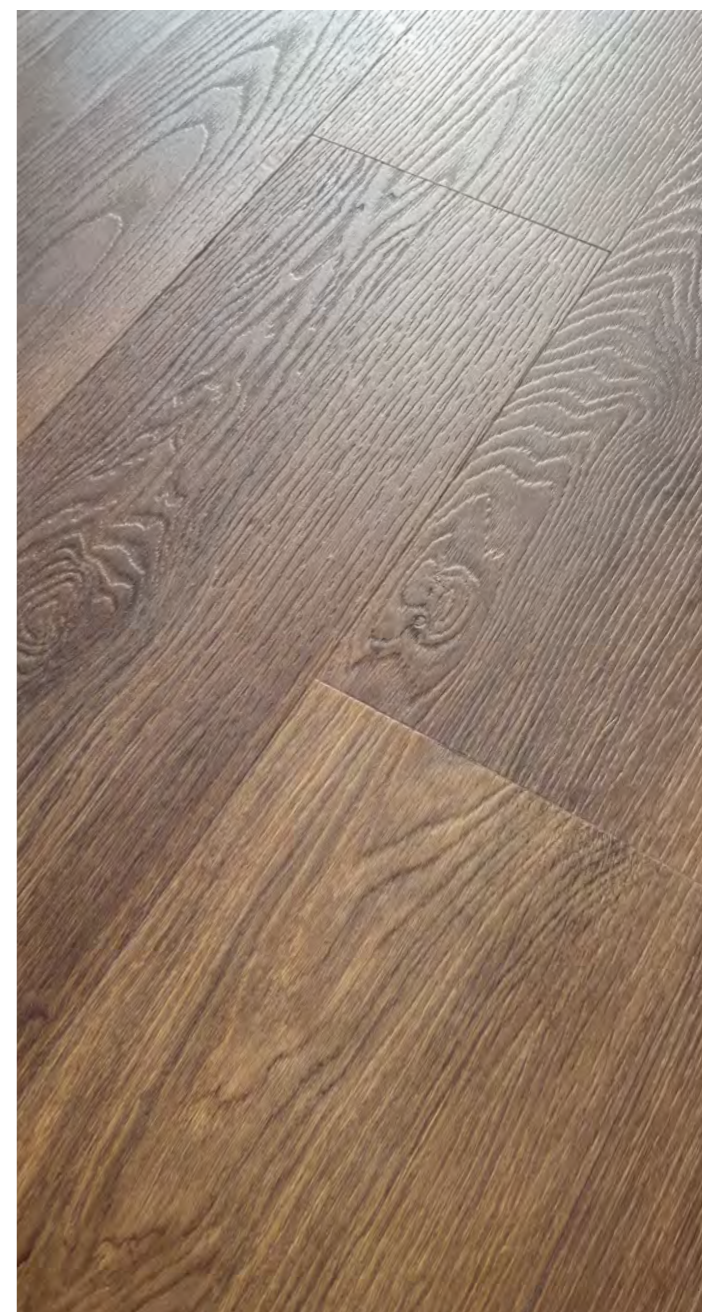
182x1220x4+1 mm - 7"x48" - CESPC182004
230x1540x5+1 mm - 9"x60" - CESPC230004
FISHBONES - 127x635x5+1 mm - 5"x25" - CESPC127004



DREAM BROWN



182x1220x 4+1mm - 7"x48"
CESPCI82001





DREAM IVORY



182x1220x4+1mm - 7"x48"
CESPC182002



230x1540x5+1mm - 9"x60"
CESPC230002

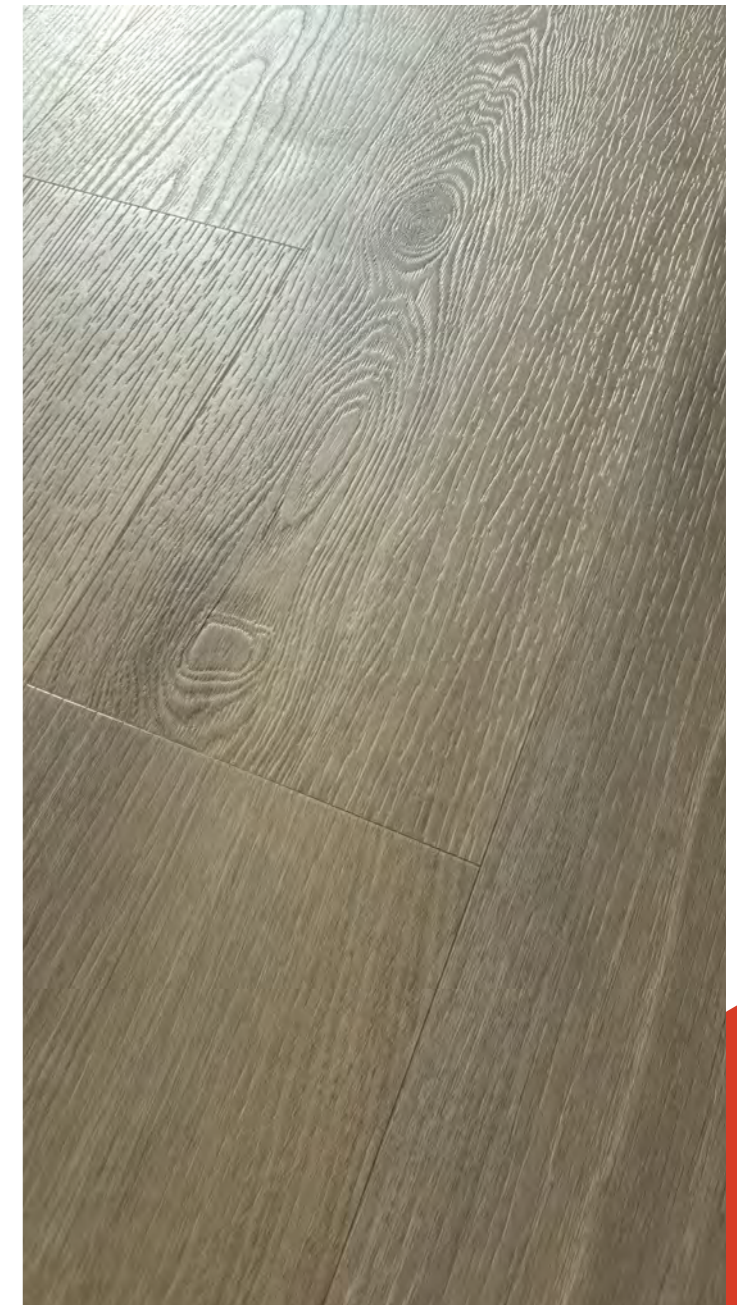




DREAM NATURAL



182x1220x 4+1mm - 7"x48"
CESPC182003





DREAM OAK



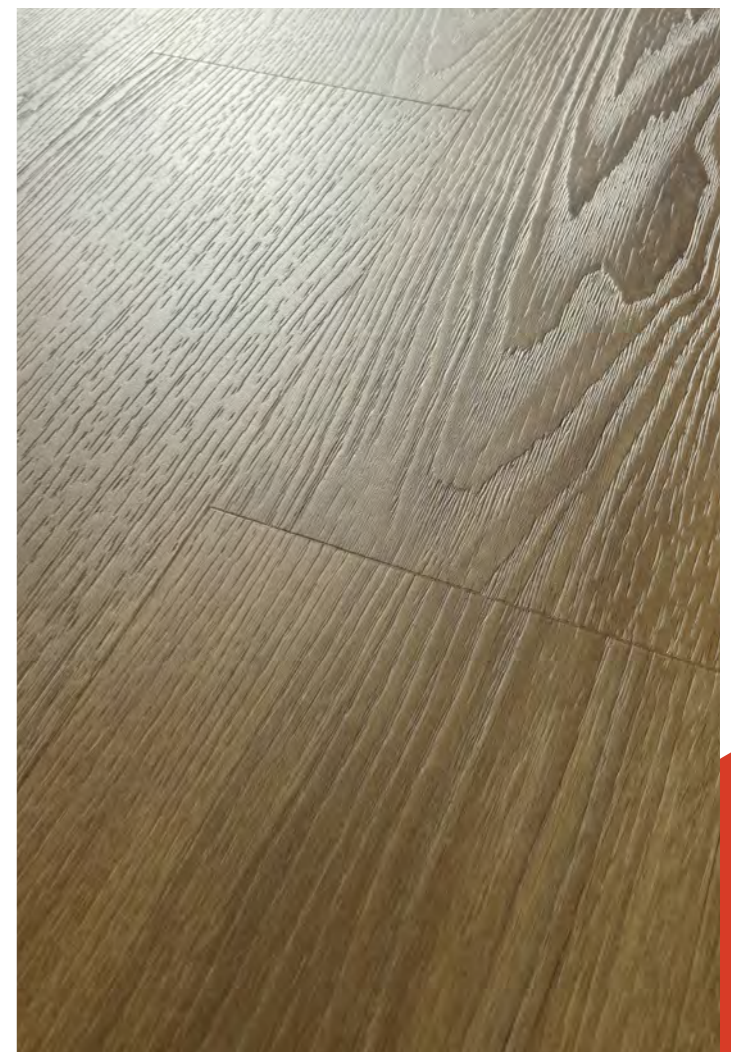
182x1220x4+1mm - 7"x48"
CESPC182004



230x1540x5+1mm - 9"x60"
CESPC230004



FISHBONES
127x635x5+1mm - 5"x25" CESPC127004



DREAM



BROWN



IVORY



NATURAL



OAK

30

DESIGN / STRUCTURE

N. Design e superfici sincronizzate (EIR)
Synchronized design and surface (EIR)
Design et surface synchronisés (EIR)
Synchronisiertes Design und Oberfläche (EIR)

Fishbones A+B 127x63,5mm : 42 design
182x1220 mm : 30 design
230x1540 mm : 24 design

Variatione di colore
Color variation
Variation de couleur
Farbvariation



Intensità dei nodi / Knot intensity / intensité
des nœuds / Knotenintensität



